

Tech Support Note: 05-01-060101-Win2000NetInstall

Windows 2000 Dial-Up Networking Installation

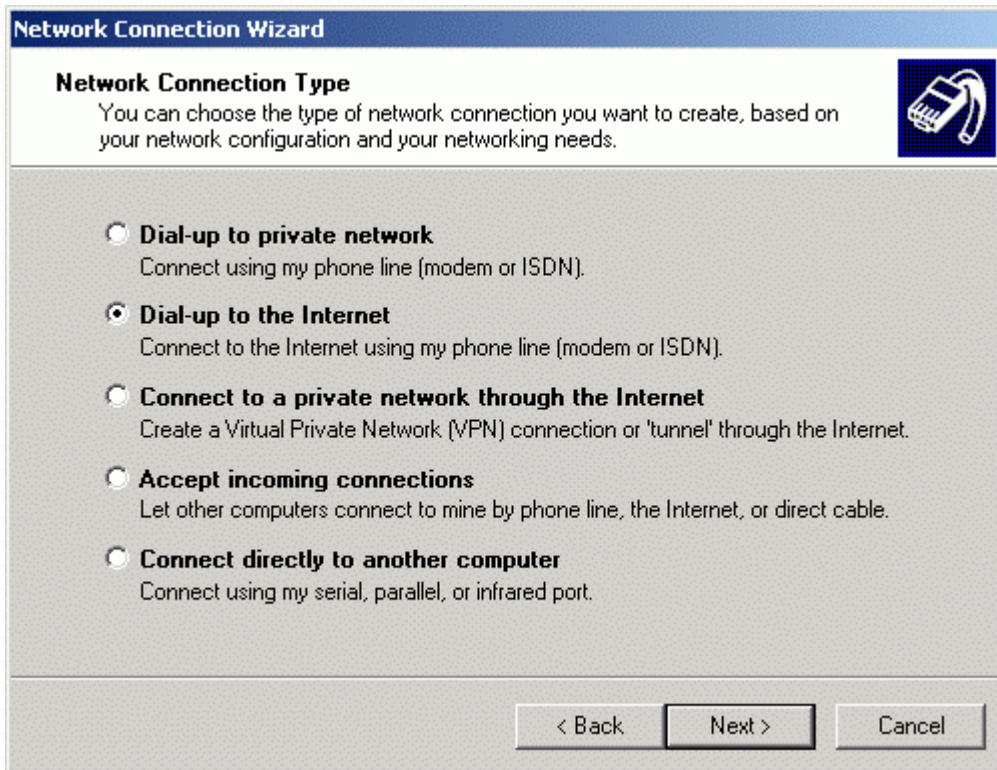
Dial-up Networking for Windows 2000 is easier to set up than previous versions of Windows.

To begin, access Dial-Up Networking:

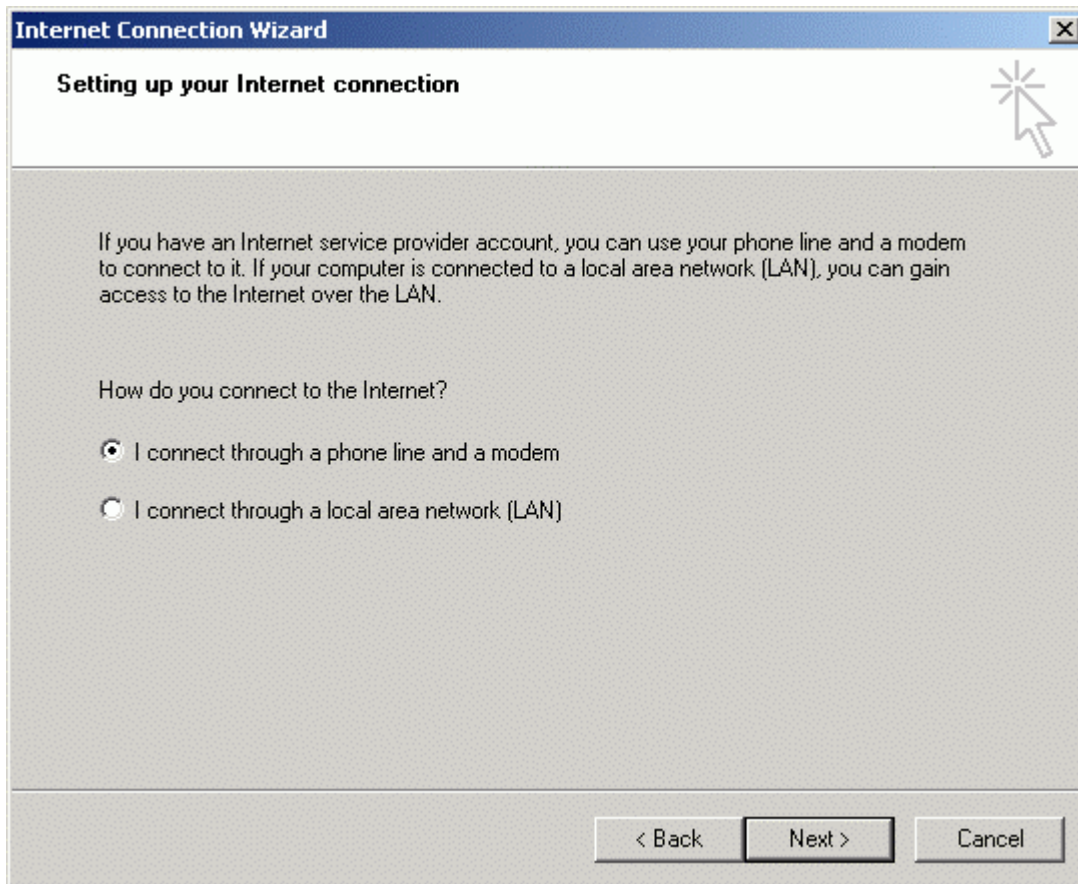
1. Click **Start**.
2. Click **Settings**.
3. Click **Network and Dialup Connections**.
4. Double click on **Make New Connection** and then click on **Next**.



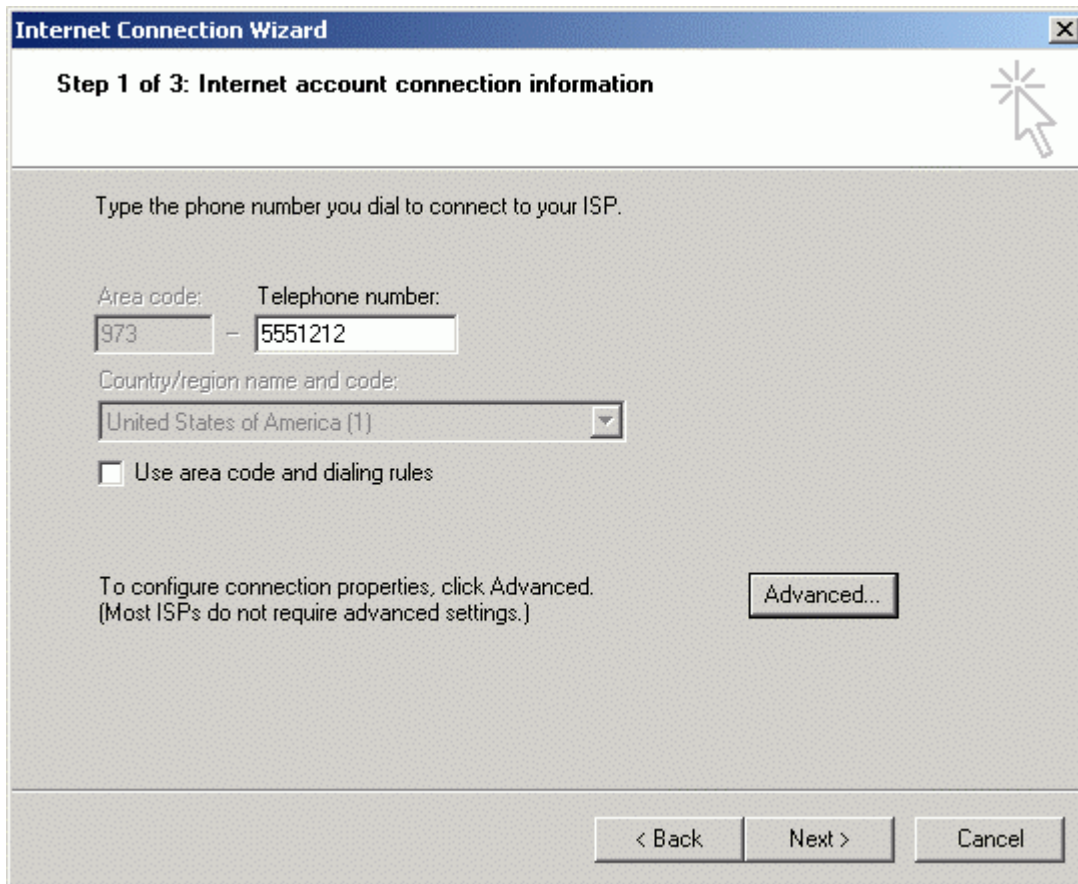
5. Select **Dial-up to the Internet** and click **Next**.
6. Select **"I want to setup my Internet connection manually"** and click **Next**.



7. Next, you will be asked how you connect to the Internet. Select "**I connect through a phone line and a modem.**" Click **Next**.



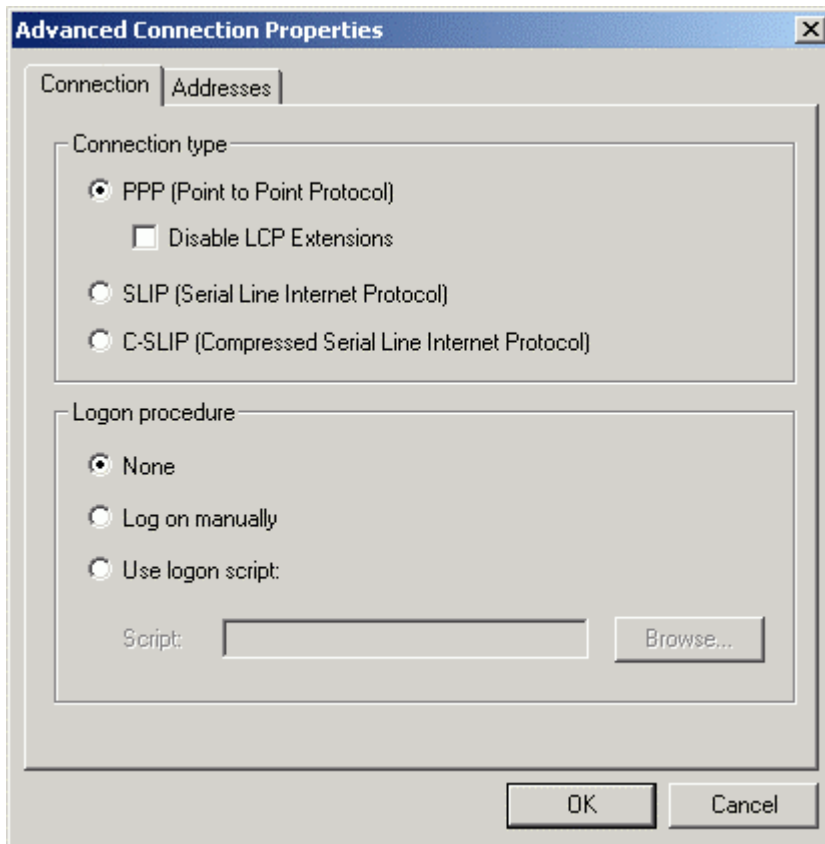
8. Type in the Dial-up POP number and uncheck **"Use area code and dialing rules."** Click **Advanced.**



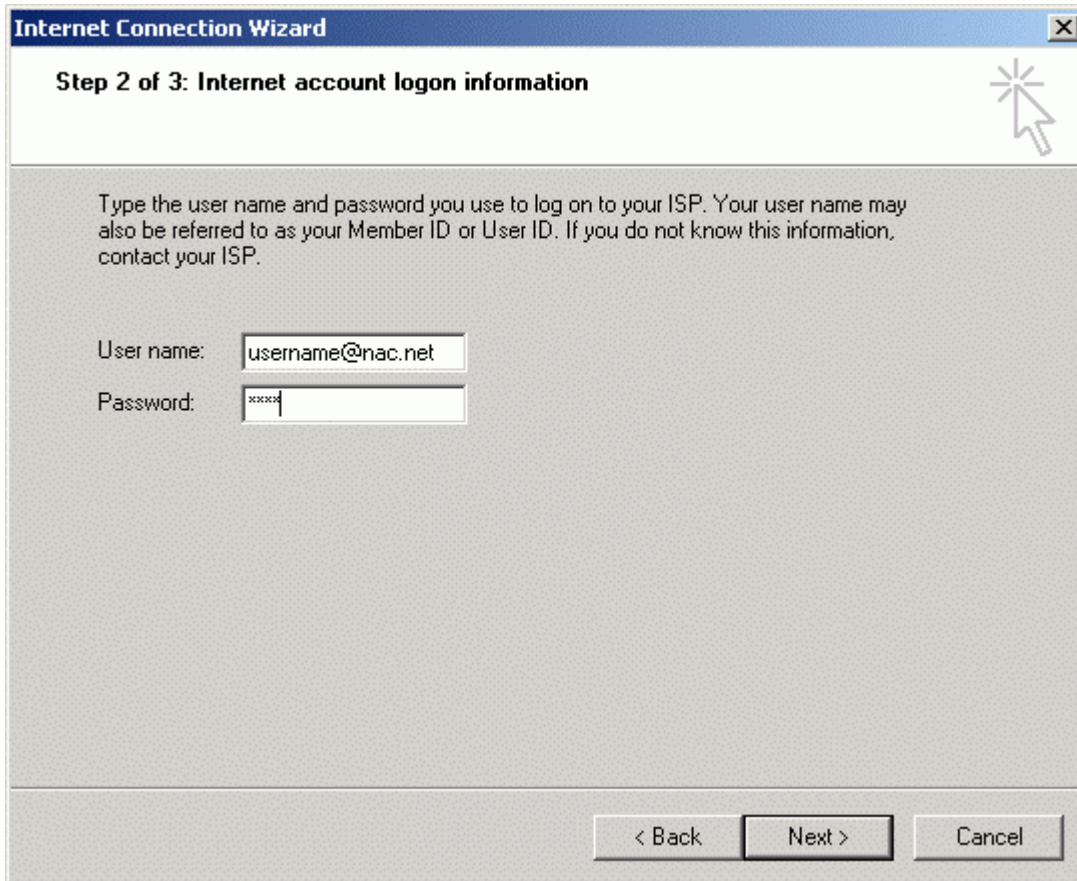
The screenshot shows the 'Internet Connection Wizard' dialog box, titled 'Step 1 of 3: Internet account connection information'. The window has a blue title bar with a close button (X) in the top right corner. Below the title bar, the text 'Step 1 of 3: Internet account connection information' is displayed in a bold font. To the right of this text is a mouse cursor icon pointing at a star-shaped icon. The main area of the dialog is light gray and contains the following elements:

- A text prompt: 'Type the phone number you dial to connect to your ISP.'
- Two input fields: 'Area code:' with the value '973' and 'Telephone number:' with the value '5551212', separated by a hyphen.
- A dropdown menu for 'Country/region name and code:' showing 'United States of America (1)'.
- An unchecked checkbox labeled 'Use area code and dialing rules'.
- A text prompt: 'To configure connection properties, click Advanced. (Most ISPs do not require advanced settings.)' followed by an 'Advanced...' button.
- At the bottom, three buttons: '< Back', 'Next >', and 'Cancel'.

9. On the **Connection** tab, verify that **PPP** is selected. Click on the **Addresses** tab.

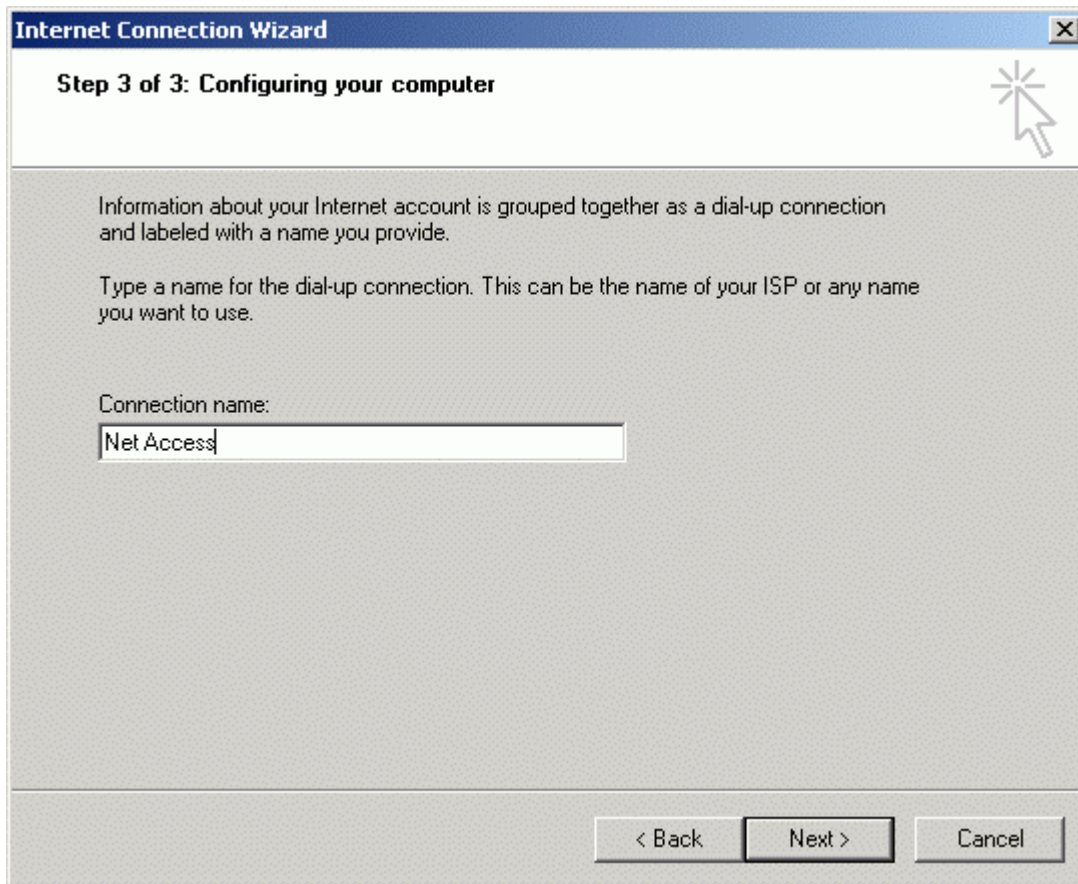


10. Next you will be prompted for your username and password. Enter this information. Click **Next**.



The screenshot shows a Windows dialog box titled "Internet Connection Wizard" with a close button in the top right corner. The main heading is "Step 2 of 3: Internet account logon information". Below the heading is a mouse cursor icon. The main text reads: "Type the user name and password you use to log on to your ISP. Your user name may also be referred to as your Member ID or User ID. If you do not know this information, contact your ISP." There are two input fields: "User name:" containing "username@nac.net" and "Password:" containing "xxxxx". At the bottom, there are three buttons: "< Back", "Next >", and "Cancel".

11. Name the connection "**Net Access**" and click **Next**.



12. Select **No** when prompted to setup an Internet email account. Click **Next**.



13. The setup is complete. If you want to connect at a later time uncheck the check box and click **Finish**.

